

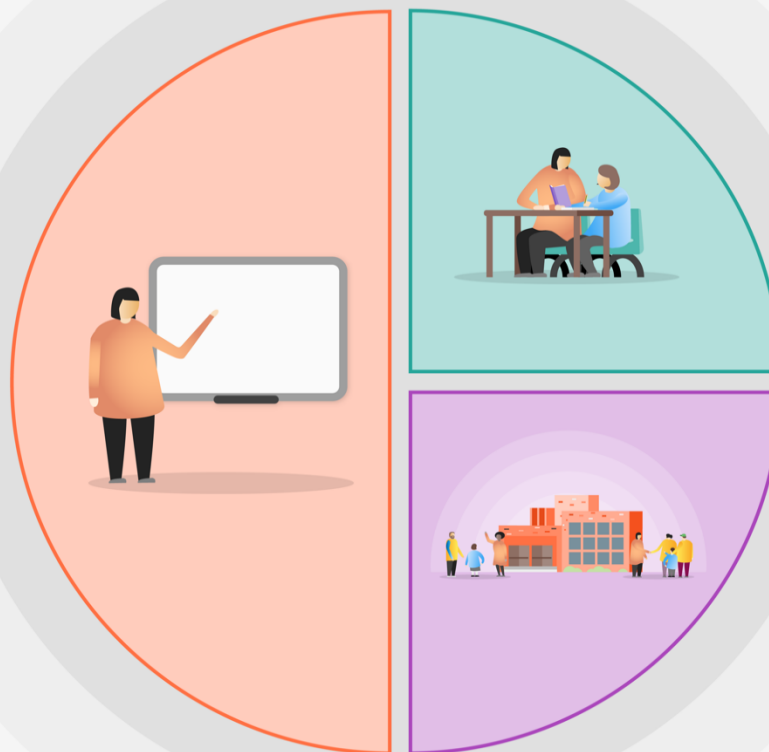
CATCH-UP PREMIUM PLANNING DOCUMENT (2020-21) – TIERED MODEL

FRINGFORD C OF E PRIMARY SCHOOL

The impact of the Catch-Up Premium on pupil attainment will be measured from data gathered at the start of the Autumn Term 2020.

1 Teaching

- Quality First Teaching supported by evidence informed CPD for teachers and support staff.
- Whole school CPD on mental health, wellbeing and SEL.
- Whole school wellbeing programme adopted - Inside Out – providing support for pupils on identifying emotions and self-regulation strategies.
- Google Classroom used to support classroom teaching and as a remote learning platform. A suite of home learning options put together to ensure continuity between home and classroom (blended) learning.
 - Reading Eggs
 - Mathletics
 - White Rose
 - Classroom Secrets
 - Charanga
 - Developing Experts
 - Tate Kids
 - SCARF
 - Rock Steady
 - Cornerstones



2 Targeted academic support

- Targeted learning support for pupils using the National Tutoring Programme aligned with classroom teaching and in conjunction with teacher assessment.
- Targeted literacy support for SEND pupils using Clicker.

3 Wider strategies

- Wider range of books obtained for the new school library to further promote reading.
- Pastoral staff training to provide small group and 1:1 support to assist children reintegrate and for ongoing wellbeing support.
- Outdoor learning strategy linked to the Inside Out programme and to maximise outdoor learning opportunities.